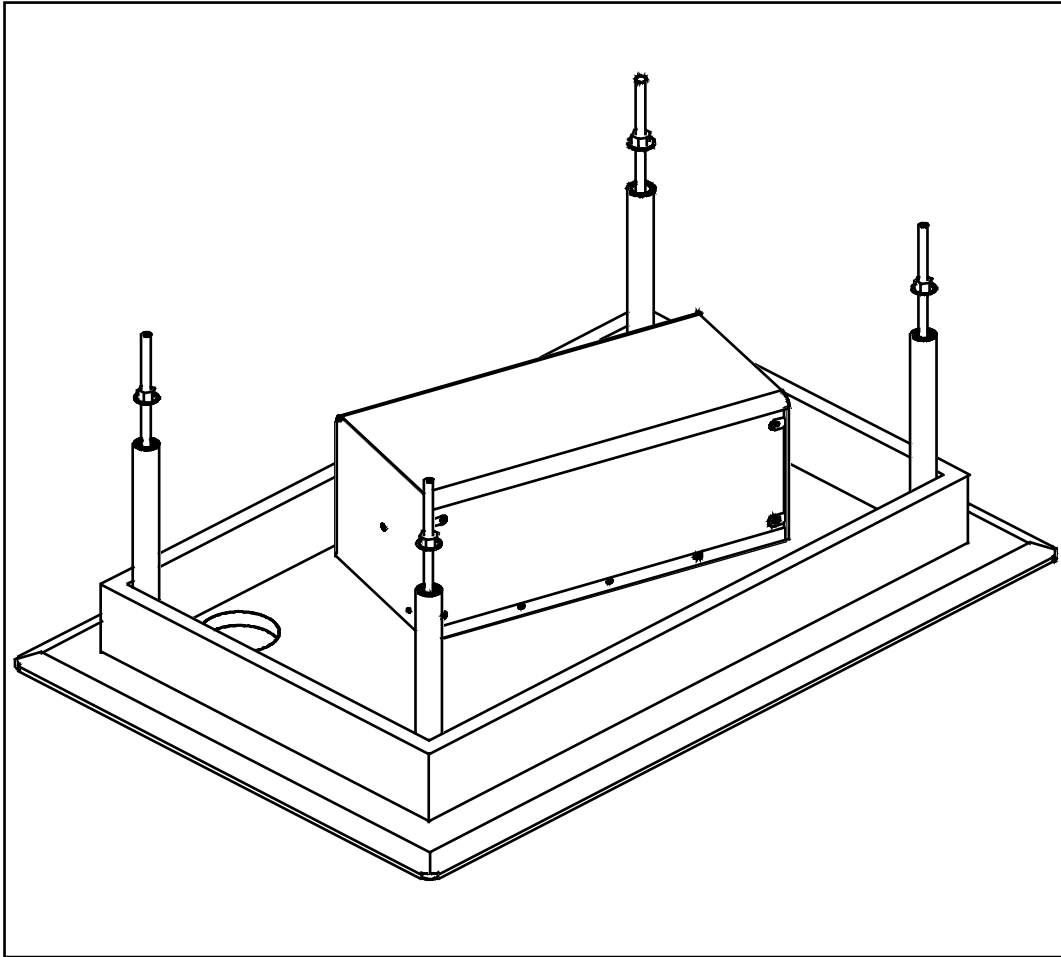




# Light Platform Kit Installation Guide



# Important Things To Know About Your

freestylist™  
support system



**Proper location makes all the difference.** It should always be installed so the dryer is directly above the client's head when seated. Location instructions provided with the installation kits should be followed carefully.

**Proper installation height.** The Freestylist is manufactured for your specific installation height. After you and the sales specialist have determined the installation height, do not deviate from it. If you need to change the height, it must be done before the Freestylist is manufactured for your salon. The recommended installation height for the Freestylist is between 8 and 12 feet from the floor.

**Proper height adjustment.** The Freestylist is equipped with internal height adjustment capabilities. If installed at the predetermined installation height, it will be adjustable for short and tall people. Adjustment instructions come with your Freestylist.

**Proper weight adjustment.** Extensive testing has proven that the dryer should be adjusted so it floats down very slowly when you let go of it at chest height. Pay close attention to the instructions so you adjust your Freestylist properly. The Freestylist is equipped with a brake that engages when the dryer is raised to its resting position.

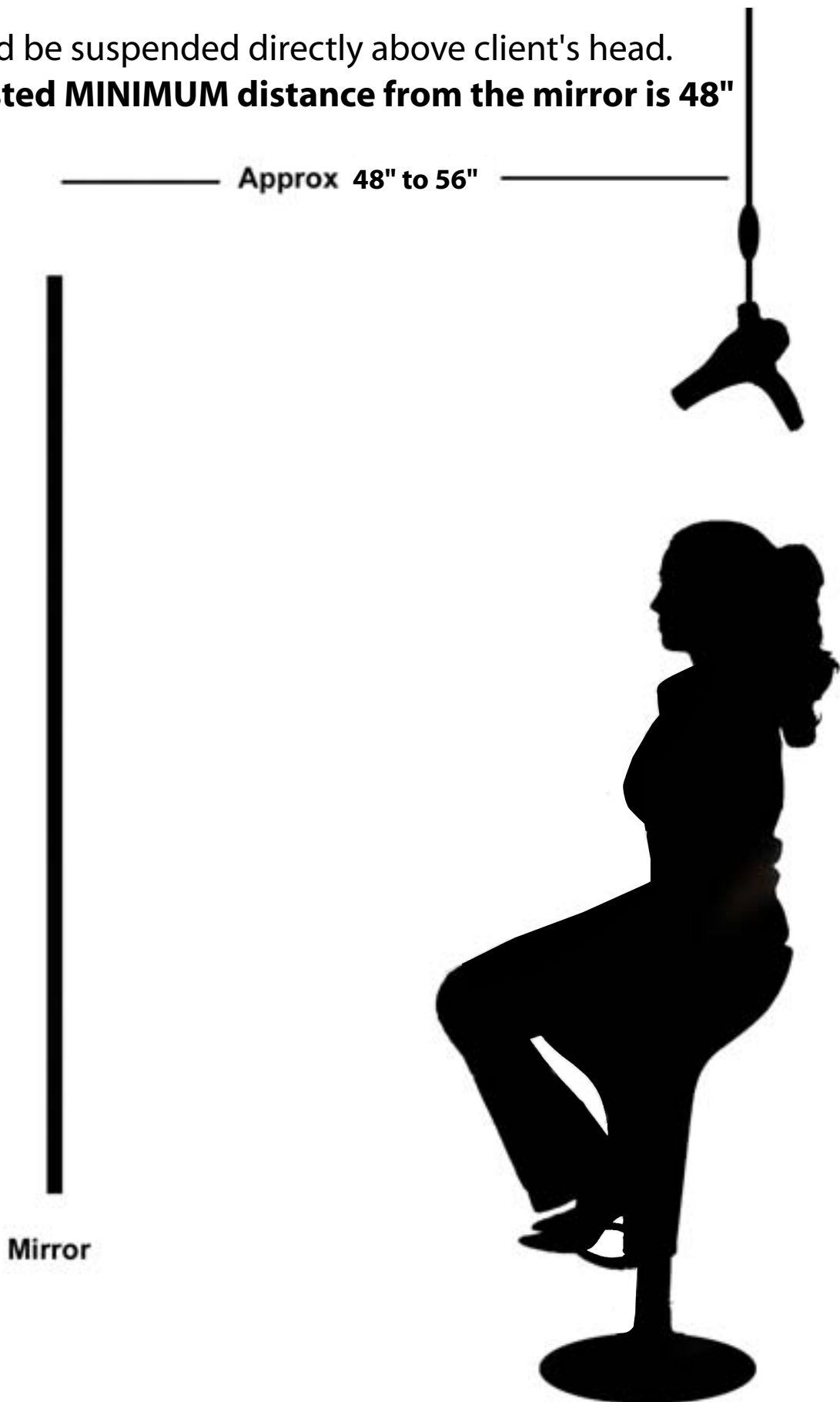
**Planning a new Salon?** Make sure your architect or designer knows exactly where your styling chair will be. This will allow them to provide an unobstructed installation location.

**Installing in an existing salon?** Check each location above the chairs for possible installation obstructions.

# Important! Dryer Location Instructions

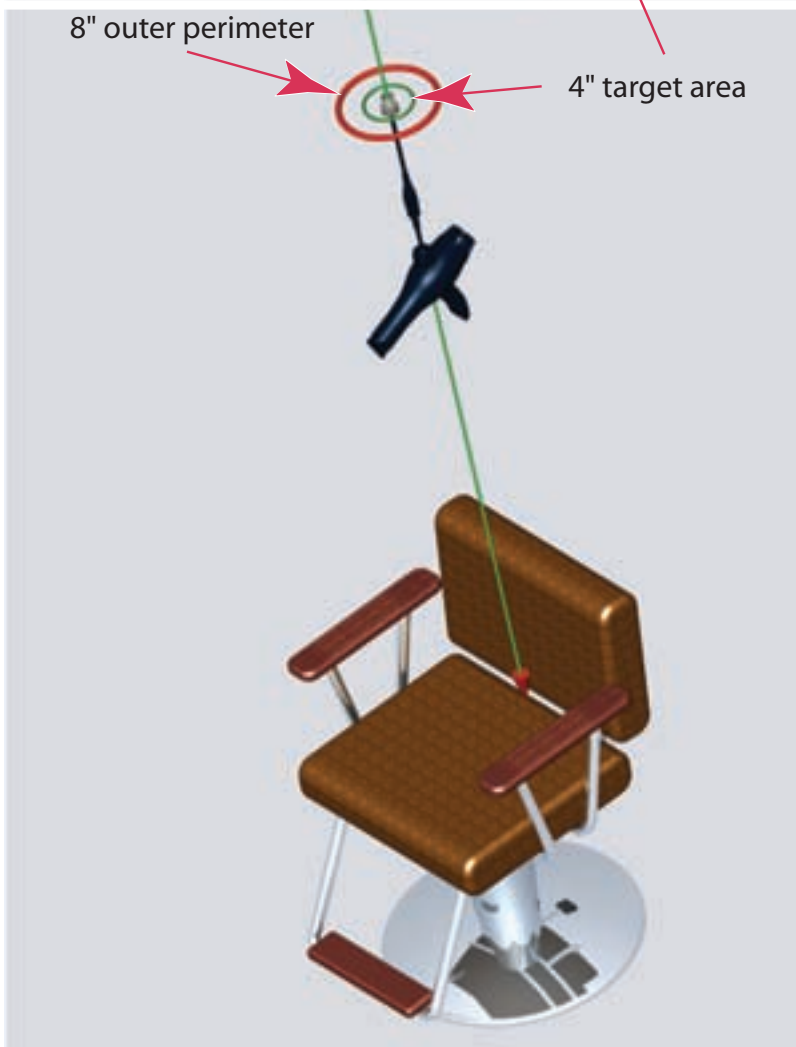
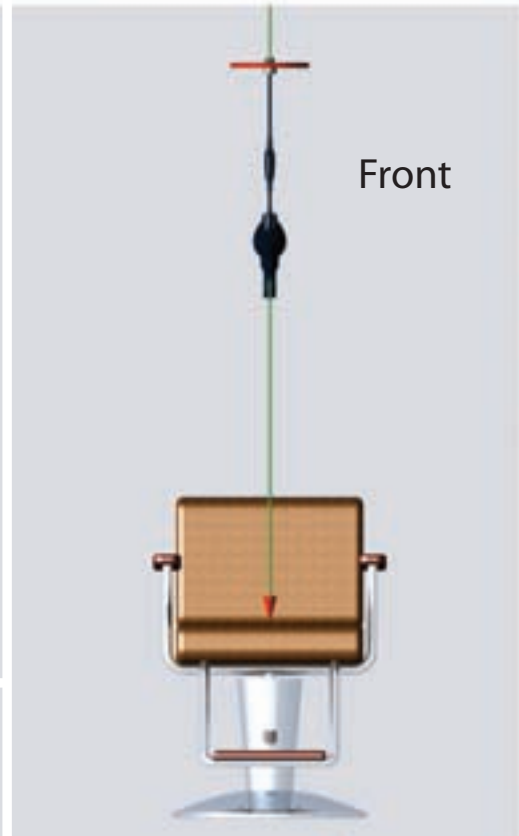
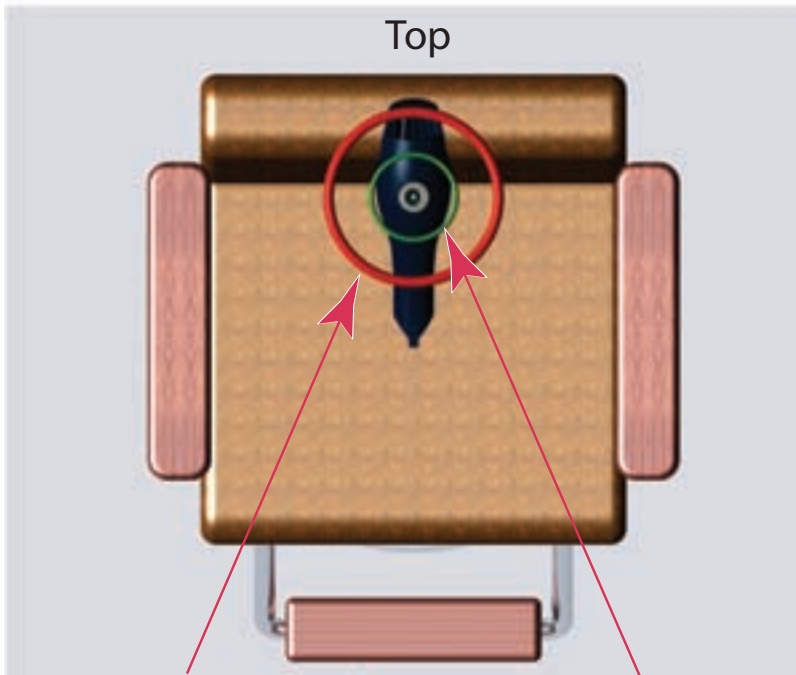
Dryer should be suspended directly above client's head.

**The suggested MINIMUM distance from the mirror is 48"**



# Important! Dryer Location Instructions

Proper positioning of the Freestylist Support system is critical for proper product performance! Install the Freestylist installation kit so the cord guide exit hole is within the 4" target area. The Freestylist should never be installed so the dryer cord falls outside of the 8" outer perimeter.



# FSS-LP

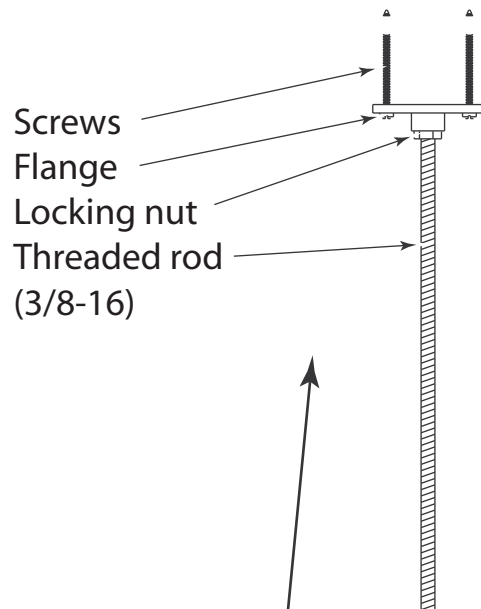
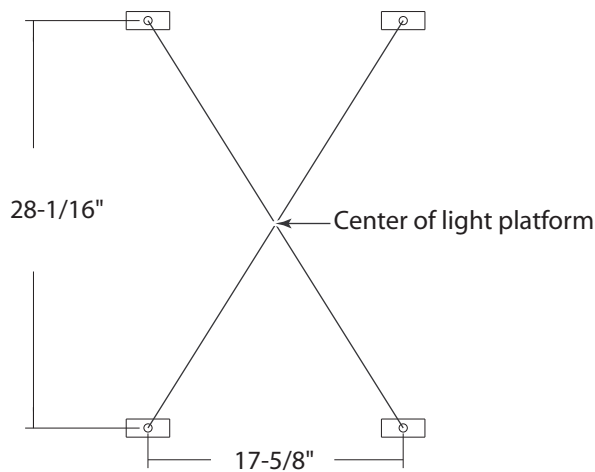
## Step 1

### Preparation to attach light platform\*

- For ceilings with wood framing or wood backing we recommend attaching 4 flanges to ceiling.
- Attach 3/8" threaded rod and secure with a 3/8" locking nut.
- Threaded rod should be no more than 36" long.
- Use appropriate fastener for your type of ceiling. See fastener suggestions below

**IMPORTANT!** Refer to 'DRYER LOCATION INSTRUCTIONS' for location of light platform.

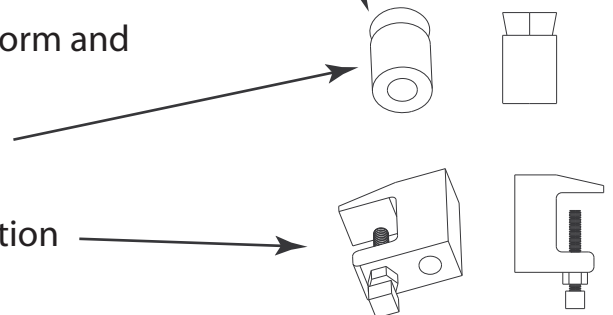
#### THREADED ROD SPACING:



#### Mounting hardware\*

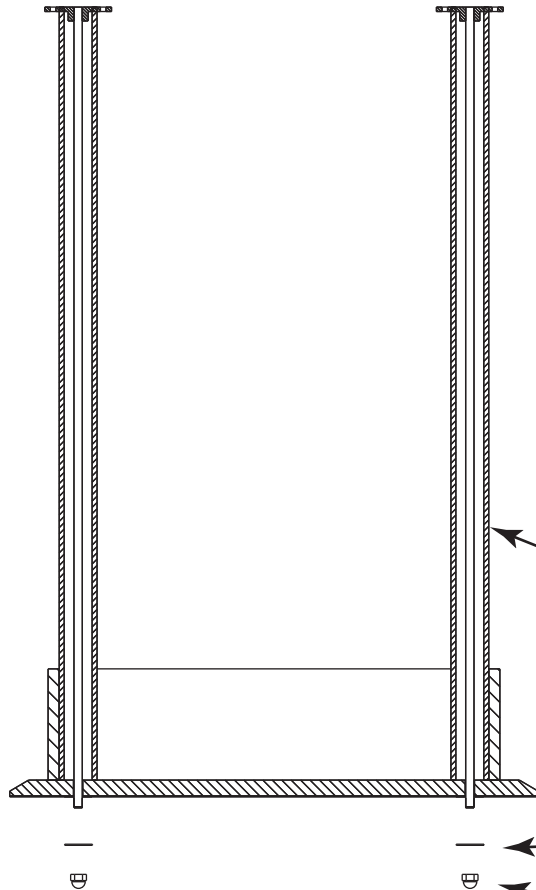
- Fasteners must support the weight of the light platform and the Freestylist™ (75lbs)
- Concrete anchors can be used for cement ceilings
- Beam clamps can be used for steel I-beam construction

\* Mounting hardware supplied by others



# FSS-LP

## Step 2

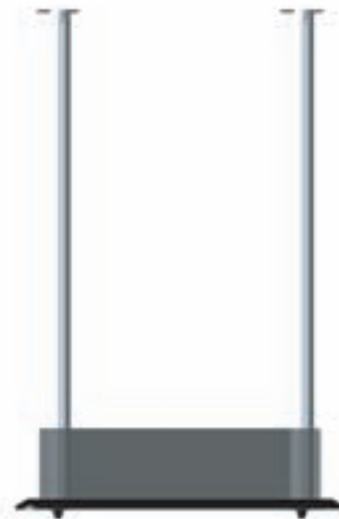
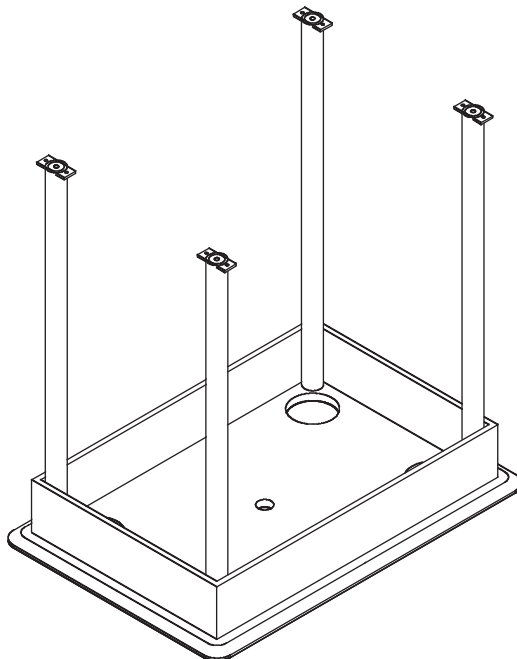


- Place PVC tubes over threaded rod.
- While holding PVC tubes in place raise the light platform so threaded rods extend 3/8" - 1/2" past the bottom.
- Attach washers and nuts (provided). Do not overtighten.
- The PVC tubes should be slightly compressed, enough so they are difficult to rotate. This will make the light platform rigid.

PVC tubes (not provided)

Washers (provided)

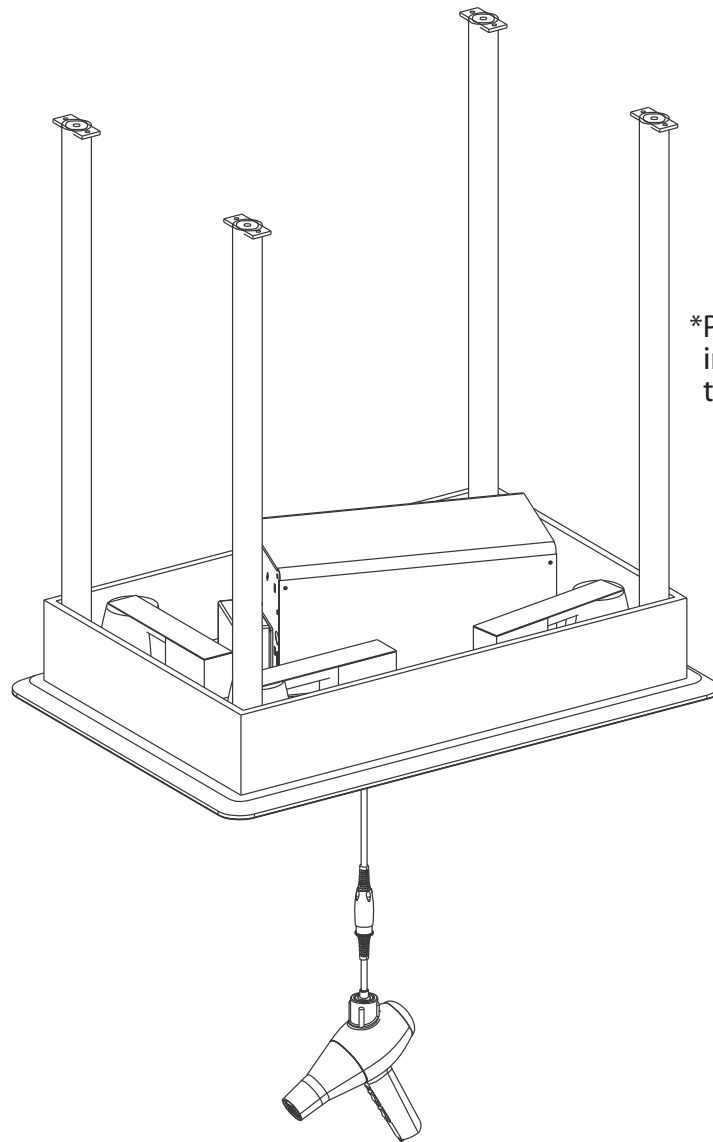
Acorn nuts (provided)



\*Light cans and Freestylist™ not shown

# FSS-LP

## Step 3



\*Power feeds can be routed inside of PVC tubing prior to attaching the light platform

- Hard wire the lights on a lighting circuit.
- On a separate dedicated circuit provide a 15 amp 120V receptacle box, this box can be mounted on the ceiling or in the light platform.
- The electrical box needs to be within 48" of the Freestylist for the power cord to reach.
- Lower the Freestylist™ in place, feeding the connector through the center hole in the light platform.
- Plug the Freestylist's power cord into the dedicated dryer circuit.
- Plug the dryer into the Freelock™ connector.

\*All electrical work must be done by a qualified electrician